

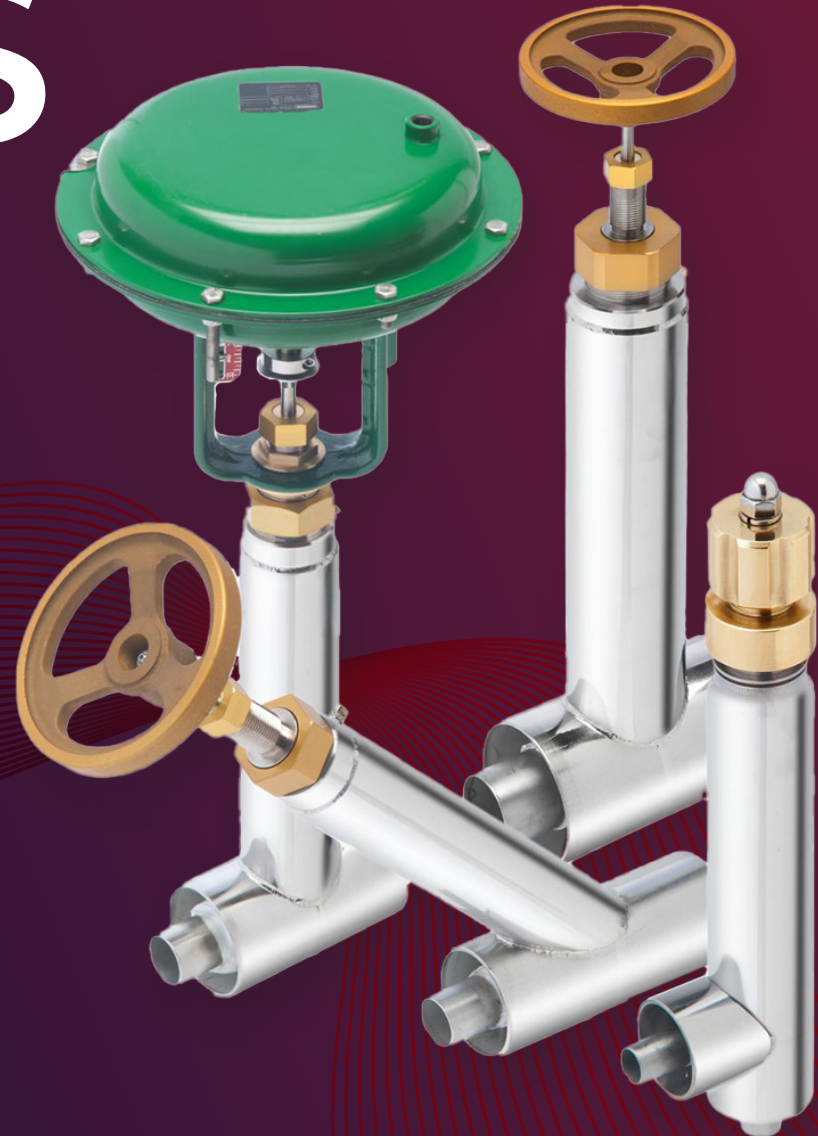
CRYOGENIC VALVES 2026

CRANE CRYOGENICS VALVE OVERVIEW 2026

CRANE
CRYOGENICS

CRYOWorks[®]

tf technifab
PRODUCTS



www.cranecryogenics.com



BELLOWS-SEAL
T- PATTERN

Size: 1/2" NPS - 12" NPS
Pressure: 300 PSI MAWP
Temp: -452° F to +212° F
Material: 300 series stainless steel

- Options Include:**
- Manual & Pneumatic Actuated
 - Vacuum-Jacketed & Non-Jacketed
 - Higher Pressure available upon request



BELLOWS-SEAL
Y-PATTERN

Size: 1/2" NPS - 6" NPS
Pressure: 300 PSI MAWP
Temp: -452° F to +212° F
Material: 300 series stainless steel

- Options Include:**
- Manual & Pneumatic Actuated
 - Vacuum-Jacketed & Non-Jacketed
 - Higher Pressure available upon request



BELLOWS-SEAL
ANGLE PATTERN

Size: 1/2" NPS - 4" NPS
Pressure: 300 PSI MAWP
Temp: -452° F to +212° F
Material: 300 series stainless steel

- Options Include:**
- Manual & Pneumatic Actuated
 - Vacuum-Jacketed & Non-Jacketed
 - Higher Pressure available upon request



LIFT CHECK
T-PATTERN

Size: 1/2" NPS - 6" NPS
Pressure: 300 PSI MAWP
Temp: -452° F to +212° F
Material: 300 series stainless steel

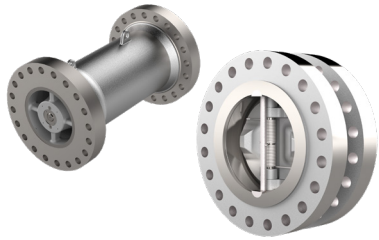
- Options Include:**
- Vacuum-Jacketed & Non-Jacketed
 - Higher Pressure available upon request



HIGH PRESSURE
BUTTERFLY

Size: 3" NPS - 24" NPS
Pressure: Full Rated Class 300
Temp: -425° F to +280° F
Material: 300 series stainless steel

- Options Include:**
- Manual & Pneumatic Actuated
 - Vacuum-Jacketed & Non-Jacketed
 - Class 600 (-320°F) available



CHECK VALVES

NOZ-CHEK® &
DUO-CHEK®

Size: 1" - 72"
Pressure: Up to ANSI Class 2500
Temp: -196° C / -320° F
Material: 304 & 316 stainless steel

- Options Include:**
- Leak rates tighter than BS6364 available on request
 - Performance characteristics tailored to suit customer flow conditions



**TV-SERIES
TUBE**

Size: 1/2" OD
Pressure: 720 PSI MAWP
Temp: -452° F to +150° F
Material: 300 series stainless steel

- Options Include:**
- Manual & Pneumatic Actuated
 - Vacuum-Jacketed & Non-Jacketed
 - Y-Pattern available



**TV-SERIES
T-PATTERN**

Size: 1/2", 1", 1 1/2", 2", 4" NPS
Pressure: 1/2" - 1": 720 PSI MAWP
2": 550 PSI MAWP
4": 450 PSI MAWP
Temp: -452° F to +100° F
Material: 300 series stainless steel

- Options Include:**
- Manual & Pneumatic Actuated
 - Vacuum-Jacketed & Non-Jacketed



**TV-SERIES
Y-PATTERN**

Size: 1/2", 1", 1 1/2", 2", 4" NPS
Pressure: 1/2" - 1": 720 PSI MAWP
2": 550 PSI MAWP
4": 450 PSI MAWP
Temp: -452° F to +100° F
Material: 300 series stainless steel

- Options Include:**
- Manual & Pneumatic Actuated
 - Vacuum-Jacketed & Non-Jacketed



**TE-SERIES
EXTENDED STEM**

Size: 1/2", 1", 1 1/2", 2", 4" NPS
Pressure: 1/2" - 1": 720 PSI MAWP
2": 550 PSI MAWP
4": 450 PSI MAWP
Temp: -452° F to +100° F
Material: 300 series stainless steel

- Options Include:**
- Manual & Pneumatic Actuated
 - Vacuum-Jacketed & Non-Jacketed

CONTACT US



EXECUTIVE OFFICE

CRANE CHEMPHARMA & ENERGY

4526 RESEARCH FOREST DRIVE,
SUITE 400, THE WOODLANDS, TX 77381
USA

TEL.: +1-936-271-6500

MANUFACTURING SITES

CRANE CRYOGENICS | CRYOWORKS

3309 GRAPEVINE STREET,
JURUPA VALLEY, CA 91752
USA

TEL.: +1-951-360-0920

CRANE CRYOGENICS | TECHNIFAB

10339 N INDUSTRIAL PARK DR,
BRAZIL, IN 47834
USA

TEL.: +1-812-442-0520

CRANE CRYOGENICS

9860 JOHNSON RD.,
MONTGOMERY, TX 77316
USA

Corporate Address

3309 Grapevine St
Jurupa Valley, CA
91752, USA

Tel.: (951) 360-0920

www.cranecryogenics.com

Crane ChemPharma & Energy, CRANE CRYOGENICS™

Crane Co., and its subsidiaries cannot accept responsibility for possible errors in catalogues, brochures, other printed materials, and website information. Crane Co. reserves the right to alter its products without notice, including products already on order provided that such alteration can be made without changes being necessary in specifications already agreed. All trademarks in this material are property of the Crane Co. or its subsidiaries. The Crane and Crane brands logotype, in alphabetical order, (ALOYCO®, CENTER LINE®, COMPAC-NOZ®, CRANE®, DEPA®, DUO-CHEK®, ELRO®, FLOWSEAL®, JENKINS®, KROMBACH®, NOZ-CHEK®, PACIFIC VALVES®, RESISTOFLEX®, REVO®, SAUNDERS®, STOCKHAM®, TRIANGLE®, UNI-CHEK®, WTA®, XOMOX®, CRYOWORKS®, and TECHNIFAB®) are registered trademarks of Crane Co. All rights reserved.

LT-76365(2)

CRANE Cryogenics | CryoWorks • Technifab | sales@cranecryogenics.com

(951) 360-0920 • (812) 442-0520