

# CT Series - Bayonet Connection

Our Close Tolerance (CT) bayonet connections have a low-profile flange to simplify installation allowing pipes to slide through hangers and supports easily. This low profile also decreases core hole diameters and required sealant.

There are many options when it comes to connections for Vacuum Insulated Piping (VIP) systems. The most popular and efficient option are bayonet connections (also known as a Johnston Couplings). These connections must be placed strategically to allow for transportation and installation at your facility.

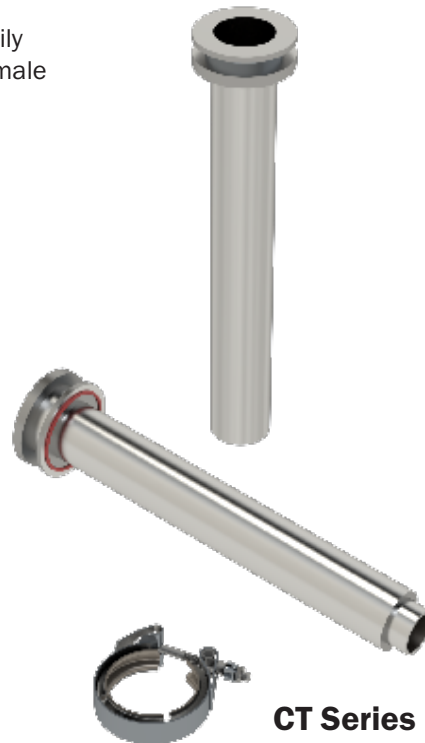
Our bayonet connection consists of a male and female connector that can be easily installed without any field welding or unique training. The tight-fitting male and female bayonet design provides a long heat path from the outer jacket to the inner pipe, creating a low heat leak connection.

## Features:

- Designed for use in vertical and horizontal positions.
  - Male bayonet points down in vertical position.
- Design Temperature of -320 °F (-196 °C/77K): covers LN2, LOX (with proper cleaning), and LAR.
- MAWP 150 PSIG (10.34 Bar).
- All internal components leak tested to  $1 \times 10^{-9}$  std cc/sec.
- 304/L Stainless Steel Material, Silicone O-Ring.

## Benefits:

- Fast and easy installation that does not require any field welding.
  - Allows for easy assembly and disassembly.
- No specific installer training required.
- Proven industry standard connection.



**CT Series**

## Technical Data:

Inner Line Dim A in (mm)	Jacket NPS Dim B in (mm)	Dim C in (mm)	Dim D in (mm)	Dim E in (mm)	Dim F in (mm)	LN2 Heat Leak Set BTU/Hr (Watt)	Part Numbers			
							Male	Female	Clamp	O-Ring
5/8" OD (15.88)	2 3/8" (60.33)	1" (25.4)	1" (25.4)	7" (177.8)	8 1/8" (206.4)	6.0 (1.76)	CP00333	CP00332	CP00434	CP00440
1 1/4" OD (31.75)	2 3/8" (60.33)	1" (25.4)	1" (25.4)	9 9/16" (242.9)	10 5/8" (269.9)	9.0 (2.64)	CP00325	CP00324	CP00431	CP00439
1/2" NPS (21.34)	2 3/8" (60.33)	13/16" (20.6)	11/16" (17.5)	9 5/16" (236.5)	9 9/16" (242.9)	6.6 (1.93)	CP00329	CP00328	CP00434	CP00435
1" NPS (33.40)	3 1/2" (88.90)	13/16" (20.6)	3/4" (19.1)	12 3/16" (309.6)	12 3/16" (317.5)	9.1 (2.67)	CP00327	CP00326	CP00432	CP00433

